

Sobeys – Marystown, Newfoundland

PROJECT
REVIEW



Day 6



Day 8

DESCRIPTION

50,000 sq ft grocery and liquor store with two interior mezzanines.

CONTRACT

Canam was contracted by Sobeys to supply the erected building envelope.

COMPONENTS

Joists, deck, Murox wall panels and structural steel from Marid Industries.

“Bottom line: if the GC gives the Erector a clean site, BuildMaster can cut erecting time by up to 25% — it gives you a quicker shell.”

Dwight Dellebuur,
Foreman,
KDM Erectors

Overview

The first of 28 truckloads left Canam’s St. Gedeon plant on June 16th for the Port in Montreal for shipping to St. John’s and a final five hour drive on to Marystown. We followed this first full BuildMaster field test, with periodic visits throughout the 27 day erection process.

Day 1 Dwight Dellebuur of KDM Erectors, greeted the first truck on-site. *“These tags are sweet, much easier – with the larger tags and the way the joists are packaged, we’ll be able to fire them up pretty quickly.”*

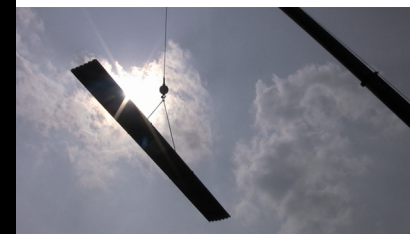
Day 7 Despite a few job-site coordination issues, Dwight had finished the skeleton and most of the exterior walls for Division 1, and the GC was almost ready to release Division 2 to the KDM crew. *“The smaller deck bundles help, and the way the joists are sorted simplifies things a lot. Being able to lay out the Murox, joist and deck bundles all together in the right positions is really great.”*

Day 23 For Dwight, the BuildMaster ‘Do Things Differently’ approach has clear implications for project planning and scheduling. *“Layout is going to be the biggest thing. You’re able to lay your whole building out and then bring in expensive equipment, like your crane. It’ll be ideal.”*



“I like the new drawings, they’re clear. On this job, I had a separate drawing for my deck, showing me exactly where to lay each bundle – it really simplifies things.”

Day 10





“Anything you can make more predictable on a construction site makes everybody happier and safer.”

Dwight Dellebuur,
Foreman,
KDM Erectors



Demonstrated Benefits

With joists sorted and bundled in order, the site was cleaner and better organized.

The drawings and the joist bundle tags further simplified the process.

This simplified process allowed KDM to change their plan and move out of the building to accommodate the other trades.

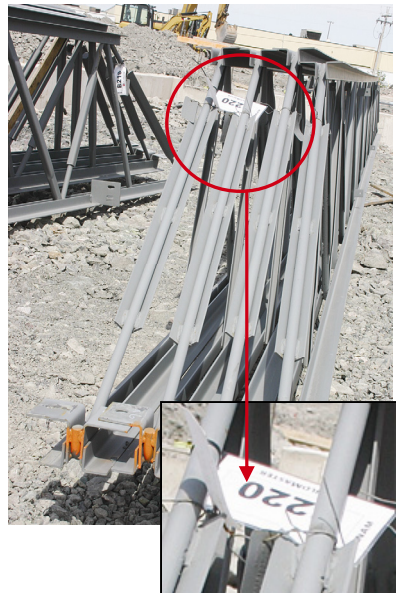
Being able to lay out the bundles of wall panels, joists and deck – everything required for one bay in one spot – optimized the use of the crane.

Most important, the initiatives which make up the BuildMaster approach allowed Dwight and the KDM crew to exceed the schedule even though they had to deal with the weather in Newfoundland and the change in plans.

What if we do things differently?



Day 11



“In the old system if we brought the wrong joist in, all the sudden I’m burning time with the crane. I’m also running the risk of the panel blowing over, or hurting one of my guys that is holding the panel.”

“On my next job, I would guess that I’d probably save a week - A WEEK - in erecting. And I wouldn’t need a forklift on the site for the entire run.”

Dwight Dellebuur,
Foreman,
KDM Erectors

Canam Canada
www.buildmaster.com
1-800-210-7833



www.buildmaster.com